



LAKHDATA

ADVERTISEMENT



PORTFOLIO
2025 - 26

MR. RAMINDER SINGH **DIRECTOR**

LAKHDATA ADVERTISEMENT



Founder's Word

LAKHDATA is a comprehensive, full-fledge marketing, advertising, and web development firm based in Chandigarh and Mohali (Punjab). Established in 2005, LAKHDATA has vast experience in all media and aspects of marketing.

LAKHDATA areas of expertise include: brand events and developments, installations of outdoor and indoor branding, print and interactive design and social networking also. We define strategic plans to develop relationships.

Philosophy at LAKHDATA ADVERTISEMENT - We are devoted to discovering more effective ways to communicate with our client's target markets. This means constantly digging, probing, learning and with alternative solutions. We determine and execute the tasks it takes to promote our clients, experimenting brands, products & events.

We help our clients to identify goals, and then we take responsibility for providing cross platform tactics to accomplish them. We work within budget constraints and we meet deadlines. Creativity is our hallmark and we deliver results. LAKHDATA has evolved with its clients with the marketplace and technologies. Our experience and capabilities enables us to advise and guide our clients to achieve success more efficiently instead of trial to avoid errors.

Our mission is to help our clients to grow their companies and nurture their brands with well crafted marketing communications. We have helped over 25 clients to grow their businesses in a wide range of industries. We are brutally honest and pragmatic. Our passion at LAKHDATA is merging the latest techniques in marketing with strategic thinking and highly creative executions.

ABOUT US



WHO WE ARE

We create compelling content, develop creative strategies, and solve problems through their innovative approaches. Our Team members also provide customized packages by keeping open communication, and provide a space for exploring new ideas

WHAT WE DO

We have the Creative Team to let you grow your business with full advertising services such as (Graphic Design / Printing / Promotional Giveaways / Advertising Manufacturing / Events & Exhibitions. Website Design & Development / Mobile Applications / Digital Marketing / Consulting & Planning 2d Animated Videos / Media Production / Photography)

HOW WE ARE DIFFERENT

1. Offer creative advertising services.
2. We collate client's requirement & then design in a perfect frame.
3. We consider you as our business partner.
4. We have the experience and know how to get the job done right within specific TAT.
5. When we promise we deliver on time with quality.

LEADERSHIP

A simple definition is that leadership is the art of motivating a group of people to act towards achieving a common goal. In a business frame, this can mean directing workers and colleagues with a strategy to meet the company's needs.

Leadership is a set of planning and behaviours that aligns people in a collective direction, enables them to work together and accomplish shared goals, and helps them adjust to changing environments.

Put even more simply, the leader is an inspirator and director of the action. He or she is the person in the group that possesses the combination of personality and leadership skills that makes others want to follow his or her direction.





***“Together, we rise”
Let's make this goal into reality.***



GRAPHIC DESIGNING

BRAND IDENTITY

Analysing, creating and defining your brand identity and business profile to raise overall audience awareness.

PRINT DESIGN

Uniquely designed and conceptual all round graphic design services your print purposes

DIGITAL DESIGN

Creating innovative and creative content on different digital design to communicate your brand and products.

PRE-PRESS

Preparers is the term to describe all of the processes that occur after design & before printing. This process usually also includes : transparency effects, color separation, color management & screening



CONTENT

Sr. No.	MATERIAL	MATERIAL CODE	RATES WILL VARY ACCORDING TO SPECIFICATION
1	ACP BOARD	LA/001	Rs. 550 - 950 /- per sqft
2	ACP CLADDING	LA/002	Rs. 225-345 /- per sqft
3	3D ACRYLIC LETTER	LA/003	Rs. 90-135 /- per sqft
4	3D ALUMINIUM LETTER	LA/004	Rs. 120-165 /- per sqft
5	3D S.S LETTER	LA/005	Rs. 145-350 /- per sqft
6	GLOW SIGN BOARD	LA/006	Rs. 195-350 /- per sqft
7	ECO SOLVENT GSB MEDIA FLEX CHANGE	LA/007	Rs. 75 /- per sqft
8	HP LATEX GSB MEDIA FLEX CHANGE	LA/008	Rs. 135 /- per sqft
9	BACK TO BACK GSB MEDIA CHANGE	LA/009	Rs. 155 /- per sqft
10	GSB VINYL CUT MEDIA CHANGE	LA/010	Rs. 135 /- per sqft
11	LOOK WALKER	LA/011	As per specification
12	FLEX BOARD	LA/012	Rs. 48-95 /- per sqft
13	ECO SOLVENT FLEX CHANGE	LA/013	Rs. 26 /- per sqft
14	HP LATEX FLEX CHANGE	LA/014	Rs. 45 /- per sqft
15	CANOPY TENT (6'X7')	LA/015	Rs. 6350 /- per sqft
16	VINYL PRINT (ECO SOLVENT MACHINE)	LA/016	Rs. 38 /- per sqft
17	VINYL PRINT (DIGITAL HP LATEX MACHINE)	LA/017	Rs. 58 /- per sqft
18	VINYL + SUNBOARD (ECO SOLVENT MACHINE)	LA/018	Rs. 56 /- per sqft
19	VINYL + SUNBOARD (DIGITAL HP LATEX MACHINE)	LA/019	Rs. 75 /- per sqft
20	ONEWAY VISION (ECO SOLVENT MACHINE)	LA/020	Rs. 56 /- per sqft
21	ONEWAY VISION (DIGITAL HP LATEX MACHINE)	LA/021	Rs. 72 /- per sqft
22	ROLL UP STANDEE (ALUMINIUM)	LA/022	Rs. 1250 /- per sqft
23	MDF CUTOUT STANDEE (MDF SHEET)	LA/023	Rs. 2250 /- per sqft
24	LED FABRIC BOX + UV PRINT + ALUMINIUM CHANNEL	LA/024	Rs. 725 /- per sqft
25	LED CLIP ON BOARD	LA/025	Rs. 635 /- per sqft
26	LED CLIP ON BLOKOUT	LA/026	Rs. 849 /- per sqft
27	LED FABRIC MEDIA CHANGE	LA/027	Rs. 125 /- per sqft
28	LED TRANSLITE MEDIA CHANGE	LA/028	Rs. 85 /- per sqft
29	ACP SIGN BOARD RETRO REFLECTIVE MEDIA	LA/029	As per specification
30	INTERIOR & CIVIL WORKS	LA/030	Rs. 2250 /- per sqft
31	LOLLYPOP/FLANGE	LA/031	As per specification
32	EVENT & EXHIBITIONS	LA/032	As per specification
33	HOARDINGS/BILLBOARDS	LA/033	As per specification
34	VAN ACTIVITY	LA/034	As per specification

Note : - Transportation, Installation & GST Charges Extra.

PRODUCT MANUFACTURING

SIGNAGE

Light Box
3D (Steel, Aluminum, Acrylic,
Neon, Wooden Signs).

FACADE CLADDING

Aludecore
Curtain Wall

MEGA SIGNS

CNC Cutting Services
We can cut any material Wood,
Stainless Steel, Aluminum, Acrylics to any shape.



EVENTS & EXHIBITION

PORTABLE DISPLAYS

Our Fast Solutions portable trade show display products contain everything you need Exhibition Stands (Pop Up - Roll Up - X-Banner - Flag - modular displays)

CUSTOM EXHIBITS

Design and manufacture creative booths and exhibit stands.

Wall Poster (Acrylic - Canvas - Wood - Foam - Foamex)



DIGITAL MARKETING

The term digital marketing refers to the use of digital channels to market products and services. This type of marketing involves the use of website, mobile devices, social media, search engines, and other similar channels. in order to reach consumers. Digital marketing became popular with the advent of the internet in the 1990s. Digital marketing involves some of the same principles as traditional marketing and is often considered a new way for companies to approach consumers and understand their behavior. Companies often combine traditional and digital marketing techniques in their strategies.



SPECIALIST IN:-

Service and Quality

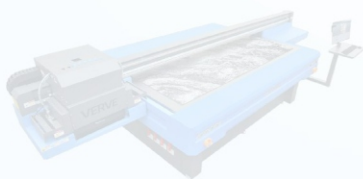
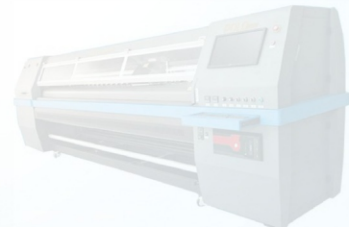
A Quality Specialist is a professional guardian of excellence, playing a pivotal role in ensuring that products, services, and processes meet established standards and customer expectations. They are the meticulous overseers who scrutinize every detail, applying rigorous testing and assessment methods to uphold the integrity of an organization's output. With a keen eye for both compliance and improvement, Quality Specialists serve as the critical link between the theoretical frameworks of quality management and their practical application in the workplace. Their expertise not only safeguards a company's reputation but also fosters a culture of continuous enhancement, making them indispensable in industries where precision and reliability are paramount.

Key Responsibilities of a Quality Specialist

- ◆ Developing and implementing quality management systems and procedures to ensure consistent product or service quality.
- ◆ Conducting regular inspections and audits to ensure adherence to industry standards and regulatory requirements.
- ◆ Analyzing quality data and metrics to identify trends and areas for improvement Collaborating with cross-functional teams to establish quality requirements for raw materials, components, products, and processes.
- ◆ Leading root cause analysis and implementing corrective actions to address quality issues Training and guiding team members on quality control processes and best practices Managing the non-conformance and corrective action processes, including documentation and reporting.
- ◆ Facilitating continuous improvement initiatives and promoting a culture of quality throughout the organization.
- ◆ Participating in product development projects to ensure quality considerations are integrated from the outset.
- ◆ Coordinating with suppliers and vendors to ensure their products and services meet quality standards.
- ◆ Preparing and presenting reports on quality performance to management and stakeholders Keeping abreast of new quality standards, technologies, and industry developments to maintain professional expertise.



**OUR MACHINERY
& EQUIPMENTS**



COLORJET POLO HQ

POLO HQ : HIGH SPEED ECO-SOLVENT INDUSTRIAL PRINTER Advanced Print Technology

POLO HQ, the high-speed Industrial grade eco-solvent printer is built for speed & quality. At a speed of 109 sqm/hr. POLO HQ displays quality print for mass production supported by IR based effective evaporative drying system to meet the high volume requirement. The 3.2 mtr roll-to-roll eco-solvent printer based on industrial grade jetting assembly ensures accuracy at high speed. The environment-friendly POLO HQ is built on heavy duty structure made with high mechanical precision standard to meet the growing requirement of those who want speed with quality.



QUALITY RESULTS— WITH EVERY PRINT

- Get the color and quality you expect with innovative HP technology including OMAS, embedded spectrophotometer.
- Match tile edges confidently—advanced features enable HP print heads to deliver color consistency ≤ 2 dE2000.
 - Maintain quality print after print—with 1200 dpi HP Thermal Inkjet print heads and auto nozzle replacement.
 - Get quality results over the life of the printer with timely, routine HP Print Care preventive maintenance.

GREEN TECH INK MECHANISM

Polo HQ is highly eco-friendly and is based on Colorjet's Green Tech. Green Tech was born out of Colorjet's commitment to printing solutions in the eco friendly green printing domain. Green Tech is powered by Colorjet's unique GreenTech printing technology that enables printing with environment friendly eco solvent inks. Green Tech ensures low chemical emissions to reduce environmental and health hazards. Green Tech eliminates harmful cyclo haexanone and uses non volatile organic compounds(NVOCs) for print results that are water resistant, fade resistant, media independent and UV safe in addition to being more environment friendly. Green Tech works towards complete solutions that adequately successfully address human, environment, and commercial issue.

CHANNEL LETTER

BENDER MACHINE

A Channel Letter Bending Machine is a highly advanced piece of equipment designed to revolutionize the complex art of shaping the contours of letters and logos for 3D signage. This sophisticated device boasts fully automated capabilities, enhancing the efficiency and precision of crafting various signs.



COLD LAMINATION

LBS-1000 (1500mm)

We hold all the aces in designing and developing qualitative Cold Laminating Machines. These machines are precisely fabricated by making use of optimum-grade basic material and components in complete adherence with the defined parameters of the industry.



UV Flatbed Printing

UV flatbed printers offer several key features: high-resolution printing, versatile substrate compatibility, durable and long-lasting prints, and efficient operation. They utilize UV LED technology for fast drying and energy efficiency. Additionally, these printers are designed for ease of use, high-speed printing, and cost-effectiveness.



HP LATEX

Take Advantage of Third-generation - Hp Latex Printing Technologies

Exceed client expectations with production speeds ideal for handling urgent jobs. The HP Latex 315 Printer produces indoor and outdoor prints on a variety of traditional signage substrates even textiles. And high-quality, durable prints provide scratch resistance comparable to hard-solvent inks.

HP Latex 315 Printer



HP LATEX

Take Advantage of Third-generation - Hp Latex Printing Technologies

Reach new indoor spaces that solvent can't, like healthcare—water-based HP Latex Ink prints are odorless. Produce sharp, consistent, repeatable image quality with high-efficiency curing, 6 colors, and 1200 dpi. Offer more—print on traditional signage substrates and beyond—up to 1.63 m (64 in)

HP Latex 335 Printer



HP LATEX

Take Advantage of Third-generation - Hp Latex Printing Technologies

Print on traditional signage substrates and beyond—up to 64 inches—print textiles with the ink collector 1. Reach new indoor spaces that solvent can't, like healthcare—water-based HP Latex Ink prints are odorless. Win new clients on eco standards—UL ECOLOGO®, UL GREEN GUARD GOLD Certified inks; prints meet AgBB criteria. 2. Produce sharp, consistent, repeatable image quality with high efficiency curing, 6 colors, and 1200 dpi.

HP Latex 360 Printer



HP LATEX

HP Latex 1500 Series Printer

Superwide 3.2-m (126-inch) HP Latex printing (Back to Back)

Water-based HP Latex Technology is unique, delivering a combination of true application versatility, high image quality and high productivity, and a sustainable approach that's better for your operators, your business, and the environment.

Fast, productive supervise applications

- Print SAV at 45 m² (480 ft²)/hr indoor quality, 2 PVC banner at 74 m² (800 ft²)/hr outdoor quality.
- Deliver vivid textiles quickly—up to 24 m² (260 ft²)/hr; optional ink collector kit for porous textiles.
- Automatically print double-sided backlit applications with the optional double sided day night kit.
- Cut risk, eliminate delays—prints are dry and scratch resistant immediately after printing.

Quality results—with every print

- Get the color and quality you expect with innovative HP technology including OMAS, embedded spectrophotometer.
- Match tile edges confidently—advanced features enable HP print heads to deliver color consistency <=2 dE20008.
 - Maintain quality print after print—with 1200 dpi HP Thermal Inkjet print heads and auto nozzle replacement.
 - Get quality results over the life of the printer with timely, routine HP Print Care preventive maintenance.



CNC ROUTER

FEATURES

20 Ft Acp Signage Without Any Joint

Machine Enclosure / Guarding : CNC routers have a machine enclosure for safety and containment of chips and cutting fluids.

Multiple Spindles : Multiple spindle heads allow routers to use several cutting tools to perform different operations with a single machine setup.

Tool Changer : Tool changers allow CNC routers to perform more than one function without requiring an operator to change the tooling.

Vacuum Table : The router table has a vacuum system to fixture the parts to be machined.



XEROX PRINTER

V 80 Digital Press

Xerox Versant 80 Digital Press Laser Commer- 80ppm, Copy, Print, Scan, Oversize High Capacity Feeder, UAP Interface Module, Light Production C Finisher, and EX-I 80 Integrated Fiery.

- Standard Functions : Printer, Scanner, Copier, Auto Duplexing, Integrated Fiery Color Server.
- Print Speed : Up to 80 pages per minute.
- Paper Sizes : 5.5" x 7.2" to 13" x 19" (A5 to A3+)
- Print Resolution : up to 2400 x 2400 dpi image quality.



VINYL CUT PLOTTER

GRAPHTEC CE6000-120

The Graphtec CE6000-120 is a professional-grade cutting plotter designed for high-speed, precision cutting of various media, including vinyl and reflective film. It features a fast and accurate digital servo drive, a 32-bit CPU, and a high cutting force, enabling efficient and versatile cutting. The machine also includes features like a 2MB buffer memory, automatic tool switching for cutting and plotting, and enhanced media feed stability.



UNIQUE LASER

LASER CUTTING MACHINE

Unique Laser Engravers are pioneers in importing laser technology in India for application in the field of signages, model making, cutting on sun board, acrylic, wooden, metal and it is good for engraving.



FABRICATION WORK

A welder is someone who both welds and performs other fabrication tasks related to metalworking, often involving shaping, cutting, and assembling metal components to create a finished product.



TRANSPORTATION VEHICLE

A transportation service that involves picking up goods from a designated location and delivering them to a different destination. It's the initial stage of the shipping or delivery process where a carrier collects a shipment from a customer, supplier to other designated point. This service can be prearranged(scheduled pickup) or on-demand, depending on the type of service and the urgency of the shipment. Our company has round the clock vehicle service for transportation so that the work can be done quickly, easily and on time.



OUR PRESTIGIOUS CLIENTS



PORTFOLIO



Few Glimpse of our projects

ACP BOARD

LA/001

ALEX/ALUDUCORE/VIRGO/FLEXIBOND

ABOUT ALUMINUM COMPOSITE PANEL (ACP)

The ACP Sheet in full form is an Aluminum Composite Panel that is made of 3 layers. The first is the Aluminum Surface, the second is the Polyethylene Core or Mineral Fire Rated Core and the third is the Aluminum Surface itself. Both sites mean a thin sheet at the bottom and a thick sheet at the middle. The material used in this is of 2 types. First Plastic Polyethylene Core material and second Fire Resistance material. These two have different specialties.

The Aluminum Composite Sheet is abbreviated ACP. It is also described as a sandwich panel. The aluminum composite panel is actually a construction material with a thermoplastic polythene base as well as a fire-retardant base layer placed between two made of aluminum sheets. Polythene is not a fire-resistant material; It fires and spreads. Exterior occasions typically include the construction, partitioning, and construction of exterior walls in addition to being used as panels of curtain walls and in the renovation of older buildings.



ABOUT ACP CLADDING

ACP Cladding or Aluminum Composite Panels sheets come up with sturdy physical properties which make it perfect cladding material for façade. One of the essential factors of any cladding material should be its longevity. Products with short life span is not perfect for cladding as they have to face severe weather all the time. Aluminum Composite Panels are amongst such material that beats all the extreme weather restraints such as rain, sun, storm, so forth. The ACP Cladding is such durable panels that it will not be required to change even after several years and therefore, have become the best choice for builders.

ACP is one of the most cost-effective and cheap materials available in the market formed by ACP Sheet Manufacturers. Besides being cheap, the ACP Cladding also feature high longevity, therefore, making them extremely useful for commercial. Thus, you get the best value for money when you buy this at affordable price along with the essential other features like longevity, weather & fire resistance along with the easy installation.



3D ACRYLIC LETTER

LA/003

ABOUT 3D LETTERS

Acrylic letters, in their 3D form, are crafted from high-quality acrylic material. This material is known for its versatility and ability to be melded into intricate shapes.



3D ALUMINUM LETTER

LA/004



3D S.S. LETTER

LA/005



GLOWSIGN BOARD

LA/006 to
LA/010

GSB signage, short for "Glow Sign Board," features a flexible substrate illuminated from behind with LED lighting, resulting in vibrant and visually appealing signage. Key features include high-quality illumination, energy efficiency, durability, and customizable design options, making them suitable for both indoor and outdoor use.



LOOK WALKER

LA/011

Look walker advertising uses people as mobile billboards! It grabs attention, targets audiences, & creates buzz. In today's competitive marketing landscape, businesses are constantly seeking innovative ways to capture attention and leave a lasting impression.



FLEX BOARD

LA/013
LA/014

"Flex board" typically refers to a flexible, printable material used for creating banners and signage, often in outdoor advertising. It's made of PVC (polyvinyl chloride) and designed to be printed on using inkjet printers. The term "flex" comes from the flexibility of the material, which makes it suitable for various applications, including hoardings, banners, and backlit displays.



CANOPY TENT

LA/015

ABOUT CLIPON/TRANSLITE

Most pop-up canopies come in two pieces, the canopy frame and the canopy top. The canopy frame is constructed of either steel or aluminum. Steel framed canopies are heavier, stronger and typically cost less than aluminum frames. Recently, stainless steel has been used because it is lighter than steel, stronger than aluminum and, as aluminum, does not rust.

*Tops for most canopies are made from a polyester fabric. *High quality canopies should come with a fabric that is UV resistant. *Most pop-up canopies are open-sided and without walls, distinguishing them from larger marquees or semi-permanent shelters.

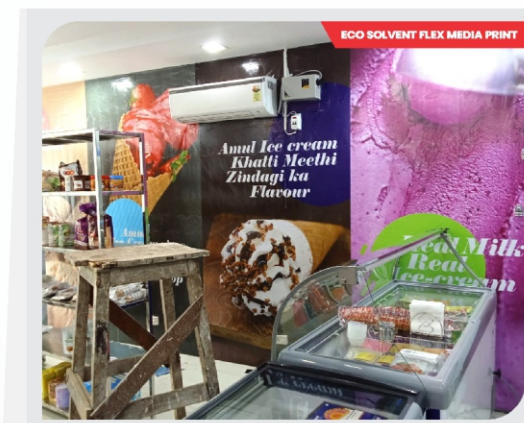


INSHOP BRANDING

LA/016 to
LA/019

VINYL + SUNBOARD

In-shop branding is a strategic advertising approach designed to enhance a brand's visibility and influence within retail environments. It focuses on creating engaging and impactful brand experiences directly inside stores, where consumers make purchasing decisions.



ONEWAY VISION

LA/020
LA/021



STANDEE & CUTOUT

LA/022
LA/023

Exhibitions and conferences provide a great platform to showcase your products and raise awareness for your brand. However, such events happen in multiple locations all over the world.

A roll-up standee comprises of four main parts: The Print: This is the communication printed over a high-quality exhibition photo poster. With impressive print quality, this is the perfect medium to display your products and grab eyeballs.

Sprint-loaded Stand: This is the mounting station in which the print is stored. Inside this is a spring-powered cylinder that pulls at the print to keep it taut and flat. When the stand is unlocked, the print rolls back into the cylinder.

Jointed Bar: This vertical bar is what the stretched print is hitched onto when opened. It gives the print enough tension to keep it taut and flat.

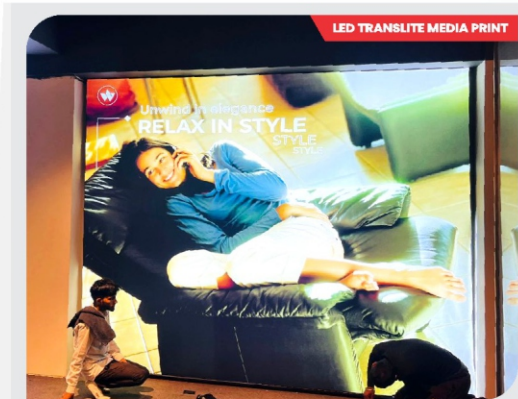
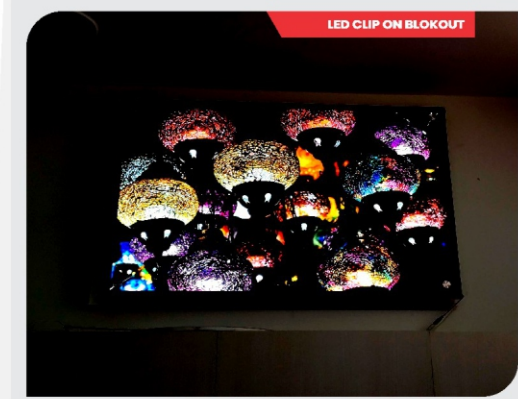
All packed in a Bag: The entire structure collapses and can be neatly packed in a bag which can then be carried under your arm.



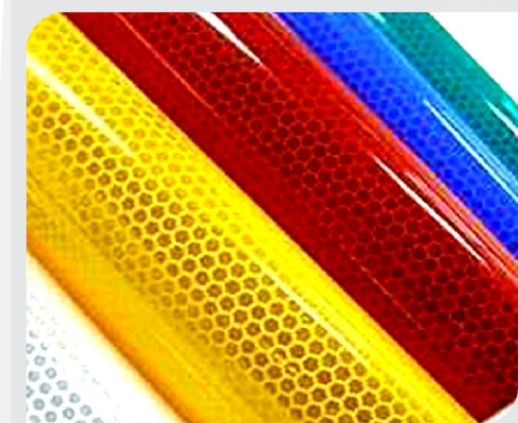
LED FABRIC BOX + UV PRINT ALUMINIUM CHANNEL LA/024 to LA/028

ABOUT CLIPON/TRANSLITE

Translite (or translite) graphics are displays that utilize a light source from behind the graphic to shine through the material and ink to make the printed image illuminate. These graphics are best utilized for low-light or nighttime advertisements to be naturally eye-catching. Translite graphics are also commonly known as backlit graphics or light box signs (among many other names). Given the nature of the illuminated display, a quality translite printed image must be vibrant to the point of being over saturated with color. This process is to prevent the image from looking dull or washed out when finally displayed. Common alternative names for translite graphics: Backlit Graphics, Lightbox Sign, Translucent Graphic, Translight Graphics.



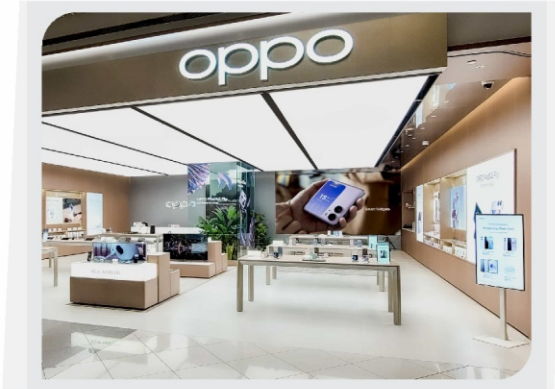
SIGN BOARD RETRO REFLECTIVE MEDIA LA/029



INTERIOR & CIVIL WORKS

LA/030

Modern offices are more and more becoming an expression of a company's brand and values, taking it much further than just a place to do business. Office design is incorporating a variety of styles and individual touches that not only say a lot about the company itself, but help make it an exciting place to come to work each day.



FLANGE & LOLLYPOP

LA/031



Events and exhibitions are vital for business growth, offering a platform for market research, customer feedback, and networking. They can help businesses expand their reach, identify new opportunities, and strengthen brand visibility.



HOARDINGS/BILLBOARDS

LA/033

Hoarding, in a general sense, is the act of accumulating and storing large quantities of items, often beyond what is needed or can be used.



VAN ACTIVITY

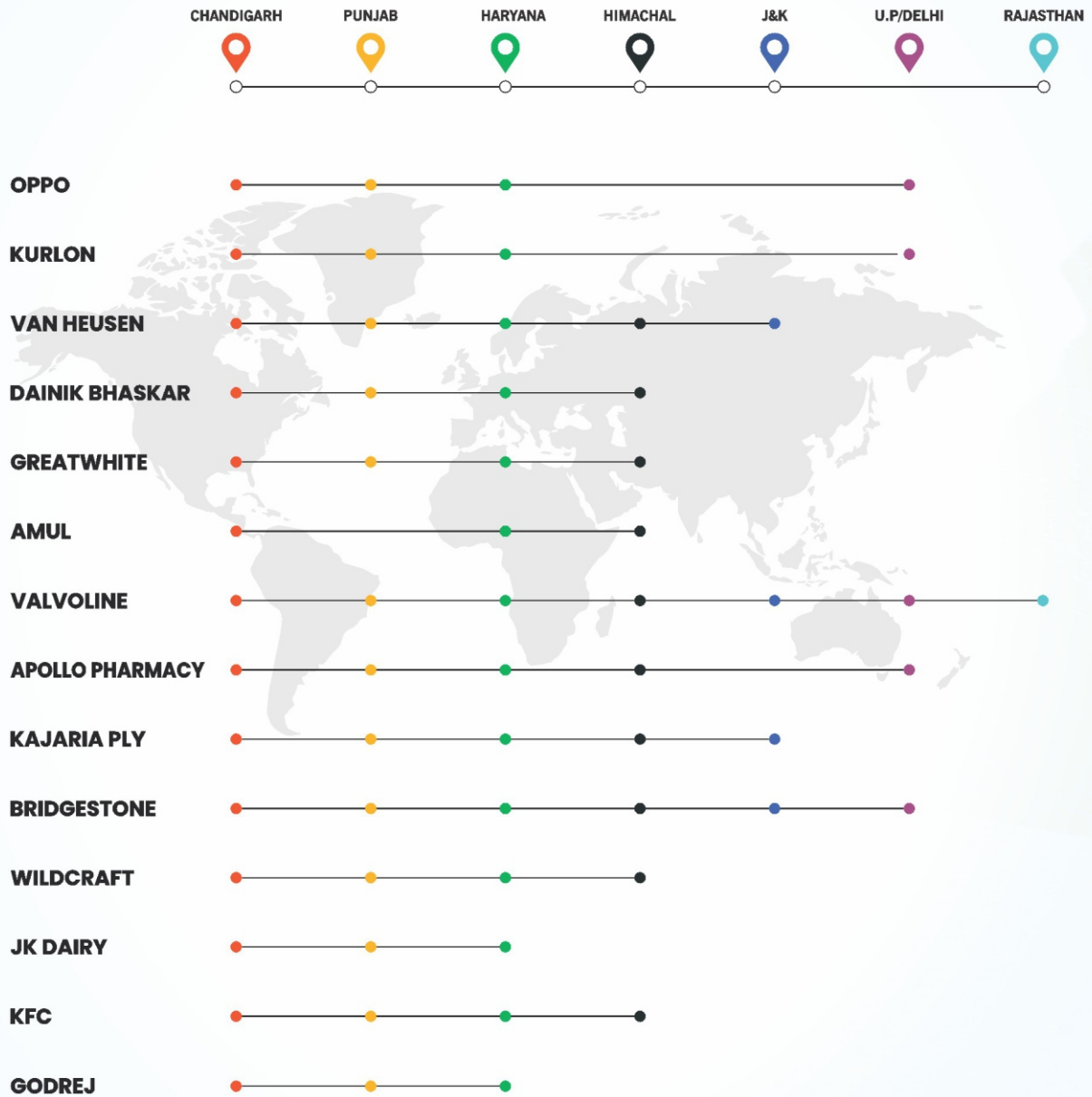
LA/034

Examples of Van Branding:

- * **Local Businesses:** Restaurants, salons, and other local businesses can use van branding to advertise their services and promotions in the community.
- * **Events and Promotions:** Van branding can be used to promote events, product launches, or special offers, reaching a wider audience before and during the event.
- * **Increased Brand Awareness:** The van's movement ensures that the advertisement is seen by a large number of people, increasing brand visibility and recognition.
- * **Targeted Advertising:** Van branding allows businesses to target specific areas or demographics, maximizing the effectiveness of their advertising campaigns.



OUR JOURNEY WITH BRANDS





Thank
you!

VISIT US

82642 23344, 75081 50881

SCF 358-59, Swastik Vihar, Patiala Road, Zirakpur, Mohali (Punjab)

www.lakhdattaadvt.com  lakhdatta2009@gmail.com

FOLLOW US:

